

Willamette Valley Alchemy

Eugene, OR 97405
willamettevalleyalchemy@gmail.com
(541) 636-7852
Lic. # 030 1000096CBB6

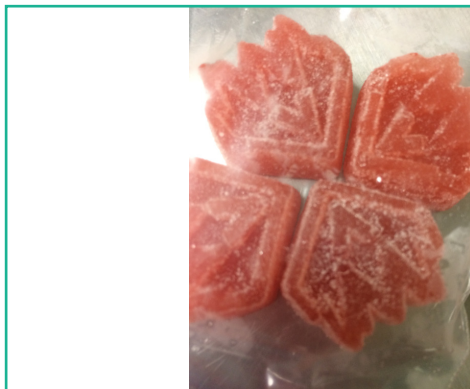
Sample: 17110AS0051.3798

Strain: Strawberry Blast Medical 2pk (Distillate-21)
Batch #: 6330; Batch Size: 21098 - grams

Ordered: 11/21/2017; Sampled: 11/22/2017; Completed: 12/01/2017; Expires: 12/01/2018

Strawberry Blast Medical 2pk (Distillate-21)

Ingestible, Soft Chew, Other
Harvest Process Lot: RGSB21; METRC Batch: 1A4010300003909000006330; METRC Sample: 1A4010300003909000006337



48.66
mg/unit
Total THC

0.50
mg/unit
Total CBD

Cannabinoids**

Pass

Analyte	LOQ	Mass	Mass
	mg/g	mg/unit	mg/g
THCa	0.01	0.13	0.02
Δ9-THC	0.01	48.55	6.99
CBD	0.01	0.50	0.07
CBDa	0.01	<LOQ	<LOQ
CBC *	0.01	0.86	0.12
CBG *	0.01	1.68	0.24
CBN *	0.01	0.37	0.05
Total		52.09	7.49

Analytical Batch ID:
PO_113017_B


1 unit= NA

Total THC = THCa x 0.877 + d9-THC, Total CBD = CBDa x 0.877 + CBD; Potency analysis carried out in partnership with EVIO Labs Bend (Bend, OR); Cannabinoid method: HPLC-UV, SOP.T.30.050; Recoveries for all analytes 70 - 130%; Replicate recoveries <20% RSD; Sample and solvent blanks not contaminated; Values reported for plant matter are by dry weight after moisture content correction. Moisture content method: AOAC 934.01 Loss on Drying; Water activity method: HC2-AW-USB humidity probe, AOAC 32.004-32.009; FD = Field Duplicate; LOQ = Limit of Quantitation; NA = Not Analyzed; NR = Not Requested; NT = Not Tested. *Target analyte for informational use only. **Conformance status based on current text of OAR 333-007.

Other Notes:

Sample collection: OAR 333-064-0100

Preservation Conditions: ≤6 °C

 1686 Pearl St.
Eugene, OR 97401
(541) 505-9193
<http://www.eviolabs.com>
OLCC: License # 010 10035420314


Ellen Parkin
Regional Laboratory Director

Confident Cannabis
All Rights Reserved
(866) 506-5866
www.confidentcannabis.com



This report shall not be reproduced, unless in its entirety, without written approval from EVIO Labs, Inc., and Oregon Analytical Services. This report is a Oregon Analytical Services certification. The results relate only to the material or product analyzed. Test results are confidential unless explicitly waived otherwise. Void after 1 year from test end date. Cannabinoid content of batch material may vary depending on sampling error. Sampling method: SOP.T.20.010; ORELAP-SOP-[###], ### dependent on sample type: 001 - Usable Marijuana, 002 - Extracts/Concentrates/Products. IC = In-Control QC Parameter; NC = Non-Controlled QC Parameter; NA = Not Applicable.

Willamette Valley Alchemy

Eugene, OR 97405
 willamettevalleyalchemy@gmail.com
 (541) 636-7852
 Lic. # 030 1000096CBB6

Sample: 17110AS0051.3798

Strain: Strawberry Blast Medical 2pk (Distillate-21)
 Batch #: 6330; Batch Size: 21098 - grams
 Ordered: 11/21/2017; Sampled: 11/22/2017; Completed: 12/01/2017; Expires: 12/01/2018

Strawberry Blast Medical 2pk (Distillate-21)

Ingestible, Soft Chew, Other
 METRC: 1A4010300003909000006337



Quality Control Data

Analytical Batch ID	QC Sample ID	Assay Name	QC Category Name
PO_113017_B	PO_113017_B_MB	Cannabinoids	Blank

Compounds	Value (%)	LOQ (%)	Qualifier	QC Limit
CBD	0	0.001	IC	LOQ
CBG	0	0.001	IC	LOQ
CBDa	0	0.001	IC	LOQ
CBN	0	0.001	IC	LOQ
Δ9-THC	0	0.001	IC	LOQ
CBC	0	0.001	IC	LOQ
THCa	0	0.001	IC	LOQ

Willamette Valley Alchemy

Eugene, OR 97405
willamettevalleyalchemy@gmail.com
(541) 636-7852
Lic. # 030 1000096CBB6

Sample: 17110AS0051.3798

Strain: Strawberry Blast Medical 2pk (Distillate-21)
Batch #: 6330; Batch Size: 21098 - grams

Ordered: 11/21/2017; Sampled: 11/22/2017; Completed: 12/01/2017; Expires: 12/01/2018

Strawberry Blast Medical 2pk (Distillate-21)

Ingestible, Soft Chew, Other
METRC: 1A4010300003909000006337



Quality Control Data

Analytical Batch ID	QC Sample ID	Assay Name	QC Category Name
PO_113017_B	PO_113017_B_LCS	Cannabinoids	Lab Control Sample

Compounds	Recovery %	Excepted Recovery % Range	Qualifier
CBD	97.7935533384	70-130	IC
CBDa	96.3315015595	70-130	IC
Δ 9-THC	97.6231515921	70-130	IC
THCa	98.7423676296	70-130	IC

